

ACME

SCREENING ROOM

January 2019 Film & Event Schedule



COMEDY/DRAMA

A BREAD FACTORY: Part Two: WALK WITH ME
SUN | JAN 6 4:00 PM
FRI | JAN 11 8:15 PM
 After 40 years of running their community arts space, The Bread Factory, Dorothea (Tyne Daly) and Greta (Elisabeth Henry-Macari) are fighting for survival when a celebrity couple, performance artists from China, come to Checkford and build an enormous complex down the street. At The Bread Factory, they rehearse the Greek play, Hecuba. But the real theatrics are outside the theater where the town has been invaded by bizarre tourists and mysterious tech start-up workers.
NOT RATED | 2 HR



DRAMA/MUSICAL

VOX LUX
FRI | JAN 4 8:00 PM
 Teenage Celeste survives a violent tragedy. After singing at a memorial service, she transforms into a burgeoning pop star and a meteoric rise to fame dovetails with a personal and national loss of innocence, consequently elevating her to: American icon, secular deity, global superstar. By 2017, adult Celeste (Natalie Portman) is mounting a comeback after a scandalous incident almost derailed her career. Touring in support of her sixth album, the foul-mouthed pop savior must overcome her personal and familial struggles to navigate motherhood, madness and monolithic fame.
RATED R | 1 HR 52 MIN



BIOGRAPHY/DRAMA

BECOMING ASTRID
SUN | JAN 6 6:10 PM
SAT | JAN 12 6:00 PM
FRI | JAN 25 8:20 PM
 A nuanced exploration of parenthood, empathy, and artistry, BECOMING ASTRID follows a teenaged Astrid Lindgren, future author of Pippi Longstocking, as she navigates life as a young mother following an affair with the editor of her small-town newspaper.
NOT RATED | 2 HR 3 MIN



CRIME/DRAMA

SHOPLIFTERS
FRI | JAN 18 8:00 PM
SAT | JAN 26 7:45 PM
SUN | FEB 3 4:00 PM
 After one of their shoplifting sessions, Osamu and his son come across a little girl in the freezing cold. Osamu's wife agrees to take care of her after learning of the hardships she faces. Although the family is poor, barely making enough money to survive through petty crime, they seem to live happily together until an unforeseen incident reveals hidden secrets, testing the bonds that unite them.
RATED R | 2 HR 1 MIN



COMEDY

CHASING THE BLUES
FRI | JAN 4 6:30 PM
SAT | JAN 12 8:15 PM
FRI | JAN 18 6:30 PM
 Two rival record collectors attempt to con an old lady out of a rare, but cursed, 1930s Blues record. When a series of unfortunate circumstances lands them in jail, the feud festers for over twenty years until they are released from prison and get a second chance at snagging the vinyl, this time from a more formidable foe.
RATED R | 1 HR 17 MIN



DRAMA/COMEDY

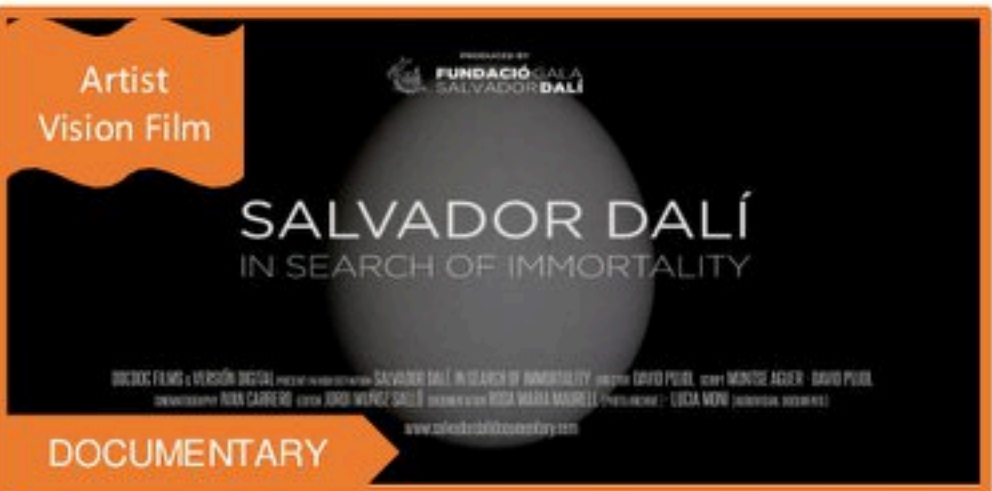
EIGHTH GRADE
SAT | JAN 5 6:00 PM
SUN | JAN 13 4:00 PM
SAT | JAN 19 7:55 PM
 Thirteen-year-old Kayla endures the tidal wave of contemporary suburban adolescence as she makes her way through the last week of middle school -- the end of her thus far disastrous eighth-grade year.
RATED R | 1 HR 34 MIN



Artist Vision Film

DOCUMENTARY

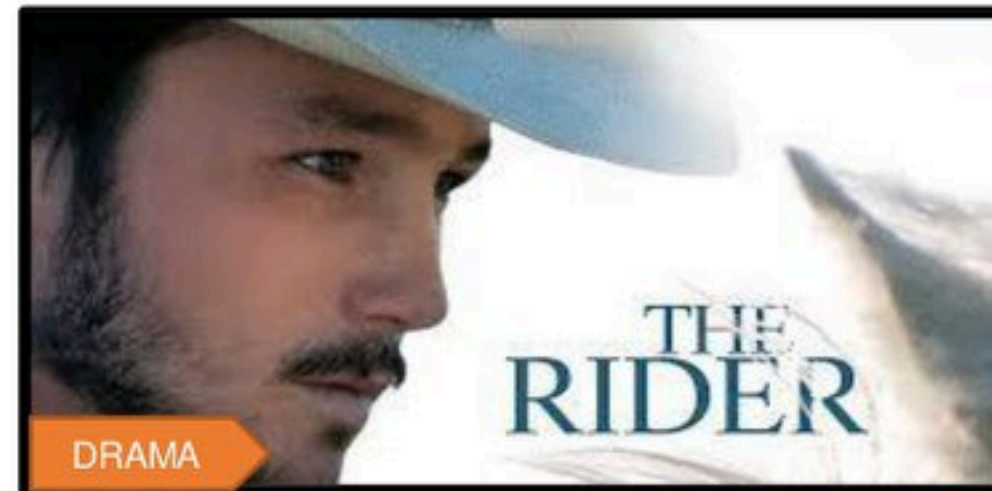
MARIA BY CALLAS: IN HER OWN WORDS
FRI | JAN 11 6:30 PM
SAT | JAN 26 6:00 PM
 Tom Voll's first film tells the life story of the legendary Greek/American opera singer completely in her own words. Told through performances, TV interviews, home movies, family photographs, private letters and unpublished memoirs-nearly all of which have never been shown to the public-the film reveals the essence of an extraordinary woman who rose from humble beginnings in New York City to become a glamorous international superstar and one of the greatest artists of all time.
RATED PG | 1 HR 35 MIN



Artist Vision Film

DOCUMENTARY

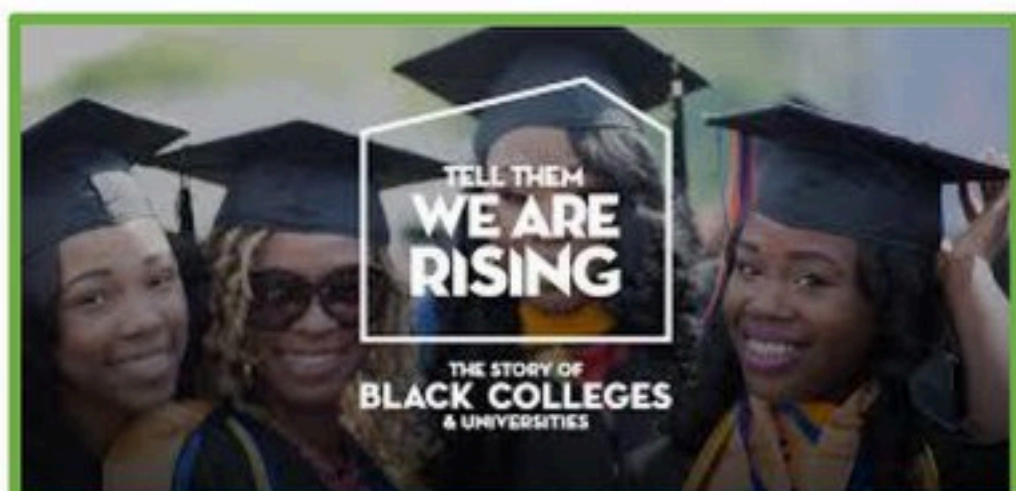
SALVADOR DALI: IN SEARCH OF IMMORTALITY
SUN | JAN 13 5:45 PM
SAT | JAN 19 6:00 PM
 A vital and artistic journey through the life and work of Salvador Dalí, and also of Gala, his muse and collaborator. It starts in 1929, a crucial year in Dalí's career and life, as he joined the surrealist group and met Gala, and advances until the year of the artist's death in 1989.
NOT RATED | 1 HR 45 MIN



DRAMA

THE RIDER
SAT | JAN 5 7:45 PM
SUN | JAN 20 6:20 PM
FRI | JAN 25 6:30 PM
 Based on his true story, stars breakout Brady Jandreau as a once rising star of the rodeo circuit warned that his competition days are over after a tragic riding accident. Back home, Brady finds himself wondering what he has to live for when he can no longer do what gives him a sense of purpose. To regain control of his fate, Brady undertakes a search for new identity and tries to redefine his idea of what it means to be a man in the heartland of America.
RATED R | 1 HR 44 MIN

SPECIAL EVENTS



MLK WEEKEND EVENT: TELL THEM WE ARE RISING W/ Discussion
SUN | JAN 20 4:00 PM
 The rich history of America's Historically Black Colleges and Universities (HBCUs) began before the end of slavery, flourished in the 20th century, and profoundly influenced the course of the nation for over 150 years — yet remains largely unknown. The documentary from Stanley Nelson (*Black Panthers*, *Freedom Riders*) and Marco Williams, the powerful story of the rise, influence, and evolution of HBCUs comes to life



NEAR NORMAL MAN AND VIOLINS OF HOPE: STRINGS OF THE HOLOCAUST w/ Presentation by Michael Shuman
SUN | JAN 27 3:00 PM
 The ACME commemorates International Holocaust Remembrance Day with Near Normal Man 30min and Violins of Hope: Strings of the Holocaust 50 min, narrated by Academy Award-winner Adrien Brody, a documentary featuring Israeli violinmaker Amnon Weinstein, who in his efforts of healing, restored violins recovered from the Holocaust. Followed by a presentation by Michael Shuman of Footsteps of Our Fathers. Additional speakers to be determined.
NOT RATED

Tickets

Film: \$8 | \$6 Member Student Pricing: \$6 Films | \$8 Film + Q&A
 Film + Discussion: \$15 | \$10 Member (MUST SHOW ID @ THE DOOR)

ACME Screening Room is sponsored by Friends of Lambertville Library, a tax-exempt non-profit organization. Our cinema space was generously provided by the City of Lambertville.

